



WUNDERBAR Towbar Operating Instructions

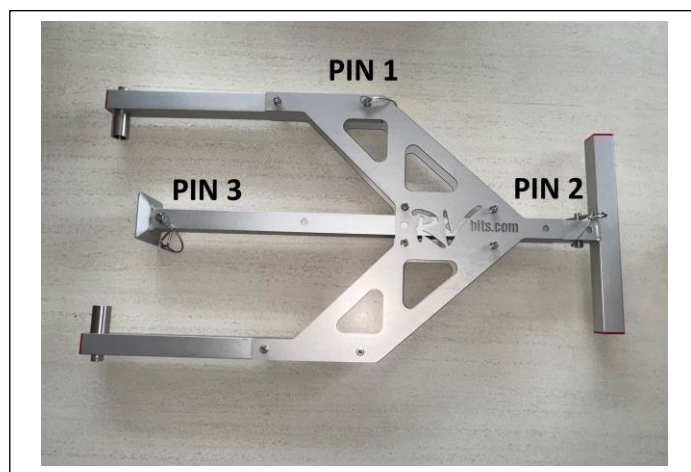
1. Stowing it in the custom made bag. There is a side pocket inside the bag that is used to keep the Base Plate and the Wing Attachment in. Please make sure that it is there before you go away on a trip.



2. The figure below shows the Base Plate and the Wing Attachment.



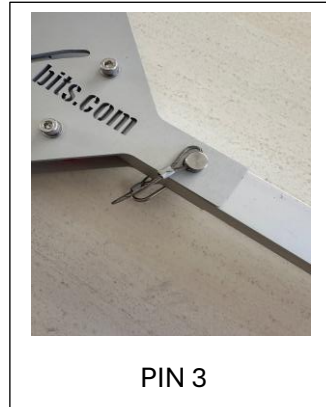
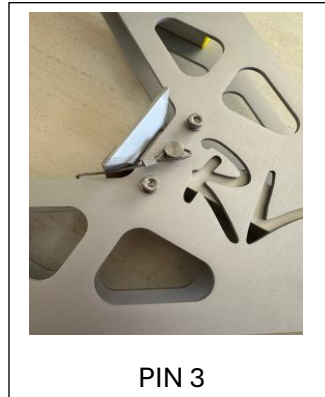
3. With reference to the figure below, the pins that should be in place for stowage in the bag are as follows: Pin 1, Pin 2 and Pin 3.



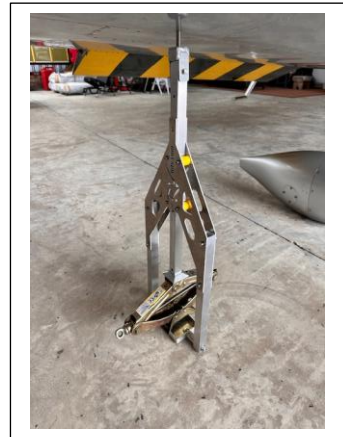
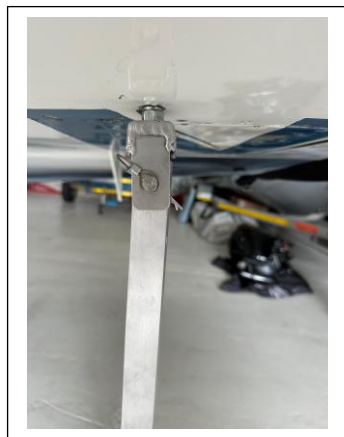
4. To use your Wunderbar as a normal towbar, Pull up the bottom tube and insert Pin 3 in one of two positions shown below.

Remove the T-handle by pulling Pin 2, pull out the handle and insert pin 2 as shown below.

Remove Pin 1 and swing the leg outward and insert it again after making sure that the bushes are engaged on the nose wheel. Make sure to insert Pin 1 again before pulling the aircraft.



5. To use your Wunderbar as a jack accessory. Screw the Wing attachment into the tie down hole under the wing. Note that it must be orientated in order for Pin 2 to be inserted from the front or the rear.



6. Attach the Towbar to the Base Plate in the same way that you would attach it to the nose wheel. Make sure that Pin 1 at the bottom is properly inserted and that the other wheels are chocked.
7. Insert any suitable scissor jack or half scissor jack and lift the aircraft.
8. NOTE: Make sure that the Wunderbar Towbar is orientated as shown when jacking.